

北環綫

連繫未來



未來社區 更蓬勃
MORE COMMUNITY
VITALITY FOR THE FUTURE

北環綫鐵路走綫

THE NORTHERN LINK RAILWAY ALIGNMENT

隨著北環綫發展，沿綫地區將有不同的基建項目及新發展區落成，為這片土地創造更多可能！

Alongside the development of the Northern Link, various infrastructure projects and new development areas will be completed along the alignment, creating a land of possibilities!

*項目的規劃和設計工作仍在進行中，實際走綫及車站地址仍有待進一步研究。

* The Northern Link project is still in the planning and design stage. The actual alignment and station locations are subject to further study.

深圳
SHENZHEN

落馬洲河套地區
Lok Ma Chau Loop

羅湖
Lo Wu

古洞北發展區
Kwu Tung North
New Development Area

粉嶺北發展區
Fanling North New
Development Area

落馬洲
Lok Ma Chau



新田
San Tin

新田 / 落馬洲
發展樞紐
San Tin / Lok Ma Chau
Development Node

牛潭尾
Ngau Tam Mei



凹頭
Au Tau



天水圍
Tin Shui Wai

朗屏
Long Ping

元朗
Yuen Long

元朗南
Yuen Long South



錦上路
Kam Sheung Road



錦田南
Kam Tin South

屯馬綫
Tuen Ma Line



上水
Sheung Shui

粉嶺
Fanling

東鐵綫
East Rail Line



掃描二維碼
了解更多及提出建議

Scan QR code to
know more and raise suggestion

mtrnorthernlink.hk

北環綫

連繫未來



未來出行 更便捷

MORE CONNECTED
MOBILITY FOR THE FUTURE

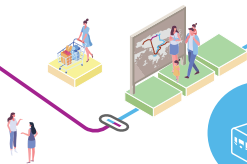
- 連接東鐵綫及屯馬綫，在新界北形成一個環狀鐵路網絡，縮短車程時間
Connect the East Rail Line and the Tuen Ma Line, forming a railway loop and shortening journey times in the Northern New Territories.

- 為新界居民提供更多出行的路線選擇，有助疏導新界東北的鐵路客流及減輕路面交通負荷
Provide more route alternatives for residents in the New Territories, helping divert railway passenger flow in the Northeastern New Territories and alleviating road traffic pressure.

未來生活 更環保

MORE SUSTAINABLE
LIVING FOR THE FUTURE

- 由規劃、設計、建造以至營運，項目每一環均以可持續發展為重要考慮
Embed sustainability into each stage of project delivery, including the planning, design, construction and operation stages.



往來古洞站至上水站

Journey time between Kwu Tung Station and Sheung Shui Station is approximately

只需約 **3** 分鐘
minutes

(現時繁忙時間的路面車程需時約15分鐘)

(Road journey currently takes about 15 minutes during peak hours)



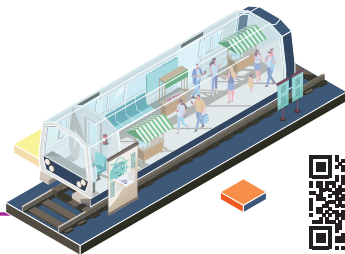
往來錦上路站至古洞站

Journey time between Kam Sheung Road Station and Kwu Tung Station is approximately

只需約 **12** 分鐘
minutes

(現時繁忙時間的路面車程需時約60至80分鐘)

(Road journey currently takes about 60 to 80 minutes during peak hours)



掃描二維碼
了解更多及提出建議

Scan QR code to
know more and raise suggestion

mtrnorthernlink.hk