

# 北環綫

## 連繫未來



未來社區 更蓬勃  
MORE COMMUNITY  
VITALITY FOR THE FUTURE

### 北環綫鐵路走綫

THE NORTHERN LINK RAILWAY ALIGNMENT

隨著北環綫發展，沿綫地區將有不同的基建項目及新發展區落成，為這片土地創造更多可能！

Alongside the development of the Northern Link, various infrastructure projects and new development areas will be completed along the alignment, creating a land of possibilities!

\*項目的規劃和設計工作仍在進行中，實際走綫及車站地址仍有待進一步研究。

\* The Northern Link project is still in the planning and design stage. The actual alignment and station locations are subject to further study.



掃描二維碼  
了解更多及提出建議

Scan QR code to  
know more and raise suggestion

[mtrnorthernlink.hk](http://mtrnorthernlink.hk)

錦上路  
Kam Sheung Road

凹頭  
Au Tau

牛潭尾  
Ngau Tam Mei

新田  
San Tin

古洞  
Kwu Tung

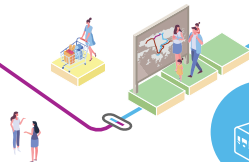
# 北環綫 連繫未來



- 連接東鐵綫及屯馬綫，在新界北形成一個環狀鐵路網絡，縮短車程時間  
Connect the East Rail Line and the Tuen Ma Line, forming a railway loop and shortening journey times in the Northern New Territories.
- 為新界居民提供更多出行的路線選擇，有助疏導新界東北的鐵路客流及減輕路面交通負荷  
Provide more route alternatives for residents in the New Territories, helping divert railway passenger flow in the Northeastern New Territories and alleviating road traffic pressure.



- 由規劃、設計、建造以至營運，項目每一環均以可持續發展為重要考慮  
Embed sustainability into each stage of project delivery, including the planning, design, construction and operation stages.



## 往來古洞站至上水站

Journey time between Kwu Tung Station and Sheung Shui Station is approximately

只需約  分鐘  
minutes

(現時繁忙時間的路面車程需時約15分鐘)

(Road journey currently takes about 15 minutes during peak hours)



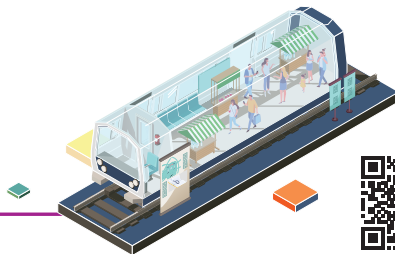
## 往來錦上路站至古洞站

Journey time between Kam Sheung Road Station and Kwu Tung Station is approximately

只需約  分鐘  
minutes

(現時繁忙時間的路面車程需時約60至80分鐘)

(Road journey currently takes about 60 to 80 minutes during peak hours)



掃描二維碼  
了解更多及提出建議

Scan QR code to  
know more and raise suggestion  
[mtrnorthernlink.hk](http://mtrnorthernlink.hk)

3

12