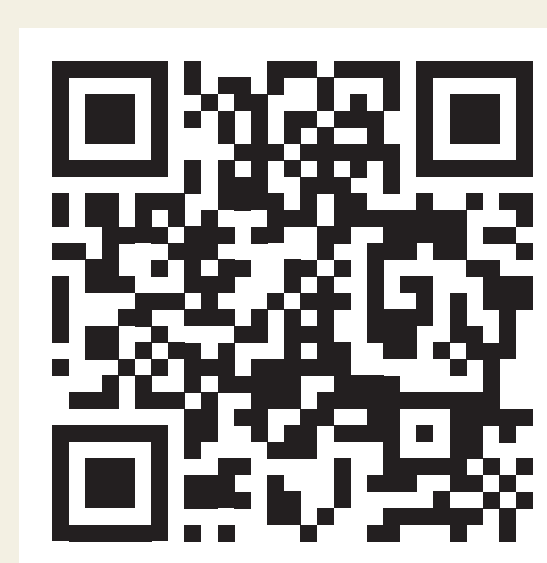


NORTHERN LINK

CONNECT
BEYOND MOBILITY



掃描二維碼
了解更多及提出建議
Scan QR code to
know more and raise suggestion
mtrnorthernlink.hk

主要效益 Key Benefits

未來出行 更便捷

More Connected Mobility for the Future

古洞站 ↔ 上水站 只需約3分鐘

Journey time is approximately 3 minutes
between Kwu Tung Station and Sheung Shui Station

錦上路站 ↔ 古洞站 只需約12分鐘

Journey time is approximately 12 minutes
between Kam Sheung Road Station and Kwu Tung Station

未來生活 更環保

More Sustainable Living for the Future

項目環環緊扣可持續發展

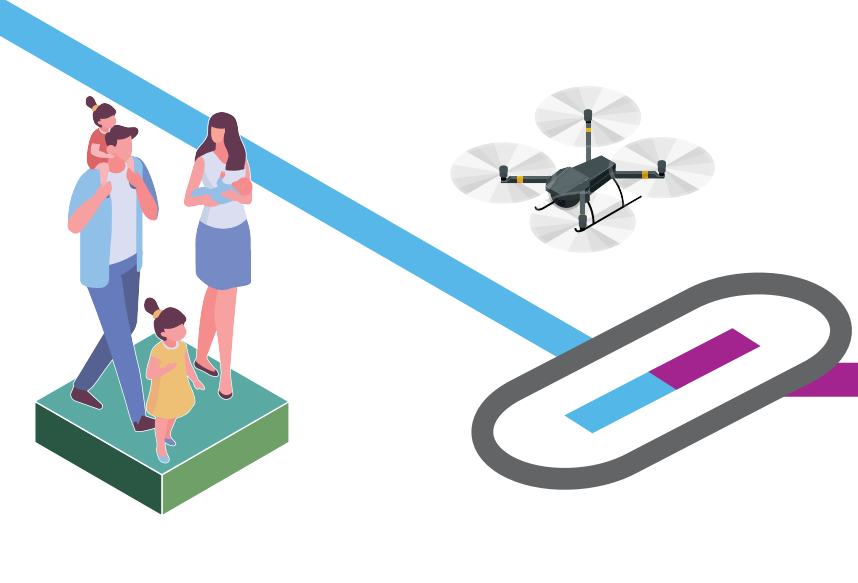
Embedding sustainability into each stage of the project

未來社區 更蓬勃

More Community Vitality for the Future

有助釋放地區發展潛力

Supporting the unleashing of
development potential in the area



北環綫項目包括:
The Northern Link project includes:

北環綫發展 Development of the Northern Link

	東鐵綫古洞站 Kwu Tung Station on the East Rail Line	北環綫 The Northern Link
主要功能 Main Function	方便現有及未來古洞北新發展區居民享用高效便捷的鐵路服務 To facilitate existing and future residents in the Kwu Tung North New Development Area to enjoy efficient and convenient rail services	完善新界東西的鐵路連接，有助釋放沿綫土地的發展潛力 To enhance the transport connectivity between the east and west of New Territories, supporting the unleashing of the development potential of land along the alignment
動工日期* Construction Commencement*	2023年	2025年
竣工日期* Construction Completion*	2027年	2034年

*視乎實際情況或有所更改 *Subject to change as per the actual situation.

聯絡我們 Contact Us

港鐵工程熱綫：2993 3333
MTR Project Hotline

辦公時間：星期一至星期五 上午8時30分至下午6時
Office Hours Monday to Friday 8:30am - 6pm

星期六 上午8時30分至下午1時
Saturday 8:30am - 1pm

星期日及公眾假期 全日休息
Sundays and Public Holidays Closed

辦公時間以外或綫路繁忙時，電話會自動接駁至留言系統，請留下口訊，我們會於辦公時間內盡快回覆。
Calls will be connected to a voice mailbox when the lines are busy or after office hours. Please leave your message and we will contact you as soon as possible.

電郵：newprojects@mtr.com.hk
Email

郵寄：香港郵政總局信箱9916號
Mailing MTR Corporation Limited, GPO Box 9916, Hong Kong

